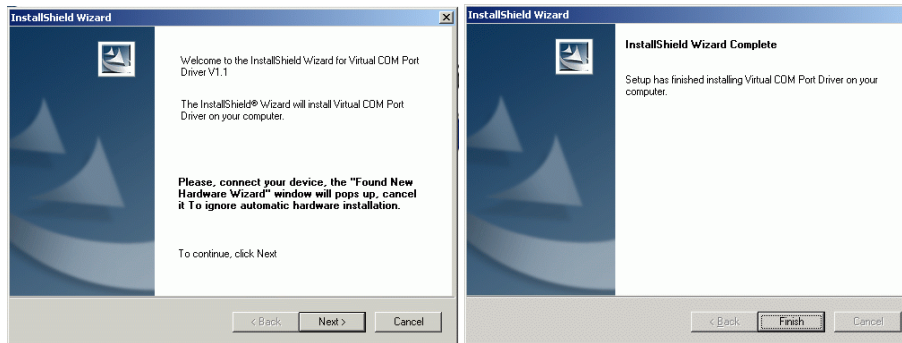


FIRST CONNECTION OF TRACKER TO A PC OVER AN USB CONNECTION – DRIVER INSTALLING

This document file was found in the archive package on <http://www.solar-motors.com/files/Helios/Helios%20analytics.zip> . To properly setup the USB driver, please follow the next steps:

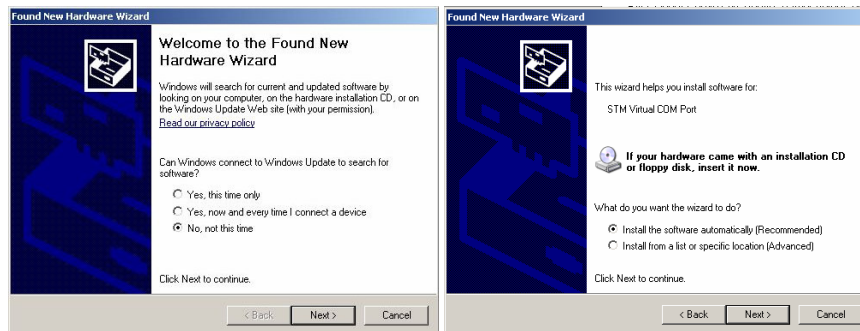
- Before connecting USB cable, run **VCPDriver V1.1 Setup.exe**, which is included in the archive package. Click »**Next**« and than »**Finish**«. Note, that you have to be an **administrator** to install a driver.



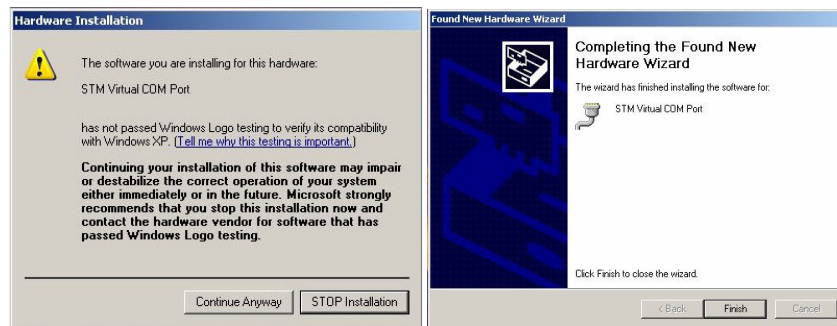
- Connect your PC to the tracker using the enclosed communication cable. Use the USB port on your computer.
- PC will require its driver installation.



- When the next window appear, click on »No, not this time« and than »**Install the software automatically**«.



- When Windows Logo testing, click on »**Continue Anyway**«. At the end click on »**Finish**«.



- Properly installation can be seen in **Device Manager**. Device manager can be found by right clicking on "**My Computer**" icon, then select "**Properties**", select "**Hardware**".



- Remember the number of **COM port**. You will need to connect to the right COM port by **Helios Analytics**.